

THE USER SHALL MAINTAIN A RECORD OF ALL CHANGES TO THIS SHEET AND SUBMIT THE SAME TO THE ARCHITECT FOR REVIEW AND APPROVAL.

E

D

C

B

A

12/22/2020 1:12:45 PM

A1
A-122C RCP- PARTIAL- LEVEL 2 - AREA C

1

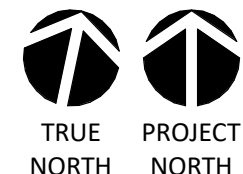
2

3

4

5

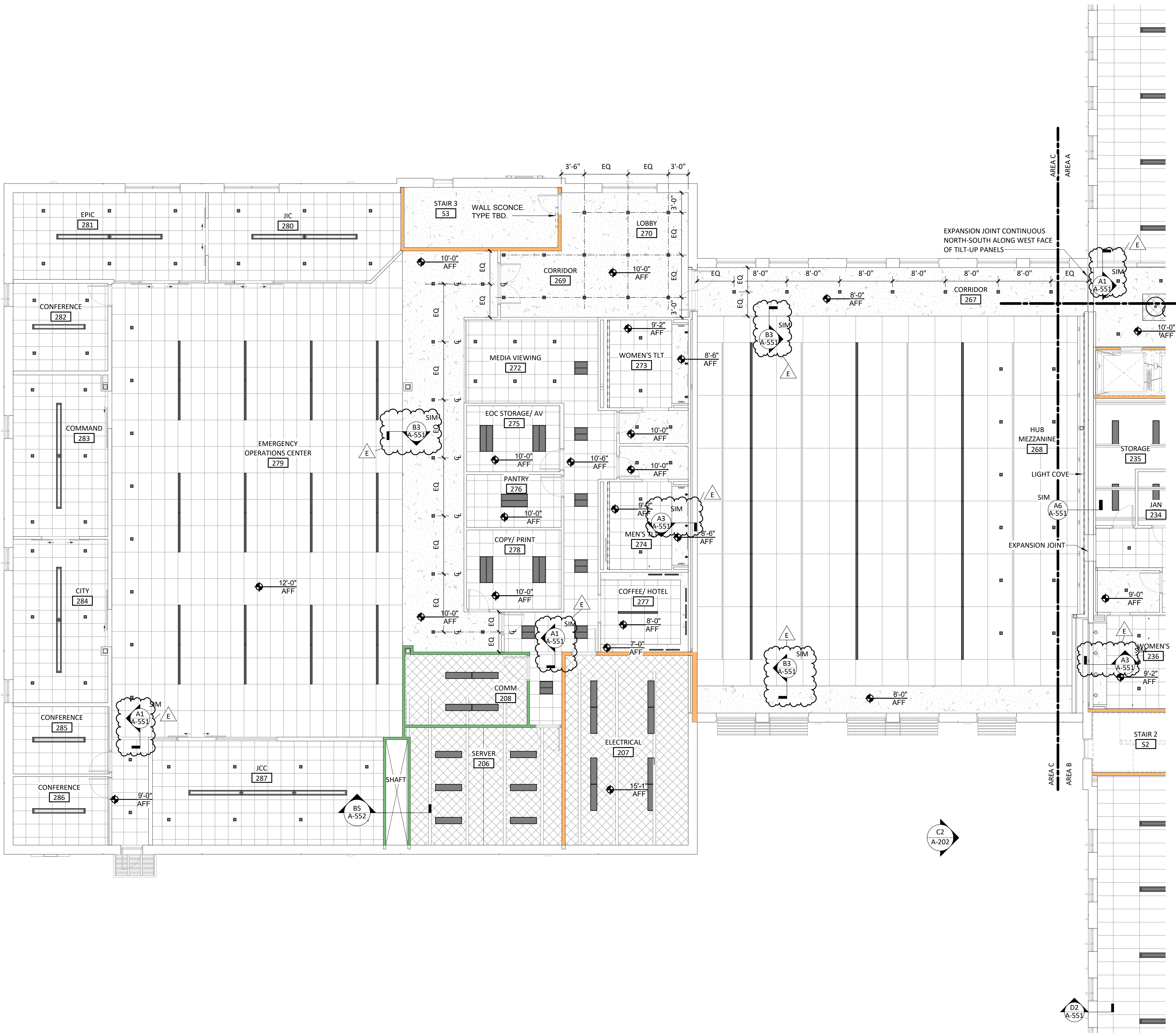
6



1/8" = 1'-0"

RCP LEGEND

1/8" = 1'-0"



LEGEND- REFLECTED CEILING PLAN

	ACT-1 24"x24" LAY-IN ACOUSTIC CEILING TILE		2 X 2 LED RECESSED TROFFER
	ACT-2 24"x48" LAY-IN ACOUSTIC CEILING TILE		2 X 4 LED RECESSED TROFFER
	ACT-3 48"x96" LAY-IN ACOUSTIC CEILING W/ INTEGRATED LIGHTING AND HVAC		4" SQUARE RECESSED LED LIGHTS
	ACT-4 48"x96" LAY-IN ACOUSTIC CEILING W/ INTEGRATED LIGHTING AND HVAC		RECESSED LED STRIP LIGHT, LENGTH VARIES
	ACT-5 48"x96" LAY-IN ACOUSTIC CEILING W/ INTEGRATED LIGHTING AND HVAC		DECORATIVE PENDANT
	3"X3"X3" PIPE GRID SYSTEM STRUCTURE ABOVE EXPOSED & PNT BLACK		CONTINUOUS LINEAR SUSPENSION INDIRECT/ DIRECT LED, LENGTH VARIES
	WPP-1 WOOD SOFFIT		1X4" LED SUSPENDED LINEAR UTILITY FIXTURE
	GYPSUM BOARD		LED PENDANT, MULTI HEIGHT SHAPE/ DIAMETER: TBD
	EXPOSED STRUCTURE - NO CEILING		WAC LIGHTING WALL SCONCE, EXACT FIXTURE TBD
	EXPOSED STRUCTURE - DRYFALL PAINTED ABOVE		RETURN AIR DIFFUSER
			EXHAUST FAN
			SUPPLY AIR DIFFUSER
			LINEAR AIR DIFFUSER
			555'-5 5/8" AFF HEIGHT ABOVE FINISHES FLOOR 9'-0" U.N.O.
			LIGHT COVE



CAPE FEAR FD STONEWATER



101 NORTH THIRD STREET, SUITE 500
WILMINGTON, NORTH CAROLINA 28401
TEL. 910.790.9901 FAX. 910.790.3111
WWW.LS3P.COM



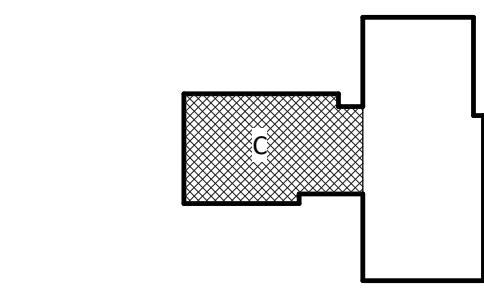
NOT FOR
CONSTRUCTION

NHC Government Center 7702-190810

NEW HANOVER COUNTY
GOVERNMENT CENTER
GOVERNMENT CENTER DRIVE
WILMINGTON, NC 28403
LS3P PROJECT: 7702-190810

A	DATE	DESCRIPTION
A	2020.08.18	T1- SCHEMATIC DESIGN
B	2020.10.16	T1- DESIGN DEVELOPMENT
C	2020.11.20	T1 GMP SET
D	2020.12.16	GMP SET
E	2020.12.22	ADDENDUM #1

KEY PLAN:



SHEET NAME:
REFLECTED CEILING
PLAN- LEVEL 2 AREA
C

ORIG SUBMISSION: 2020.12.16
CURRENT: 2020.12.22

ADDENDUM #1

SHEET:

A-122C

GMP SET